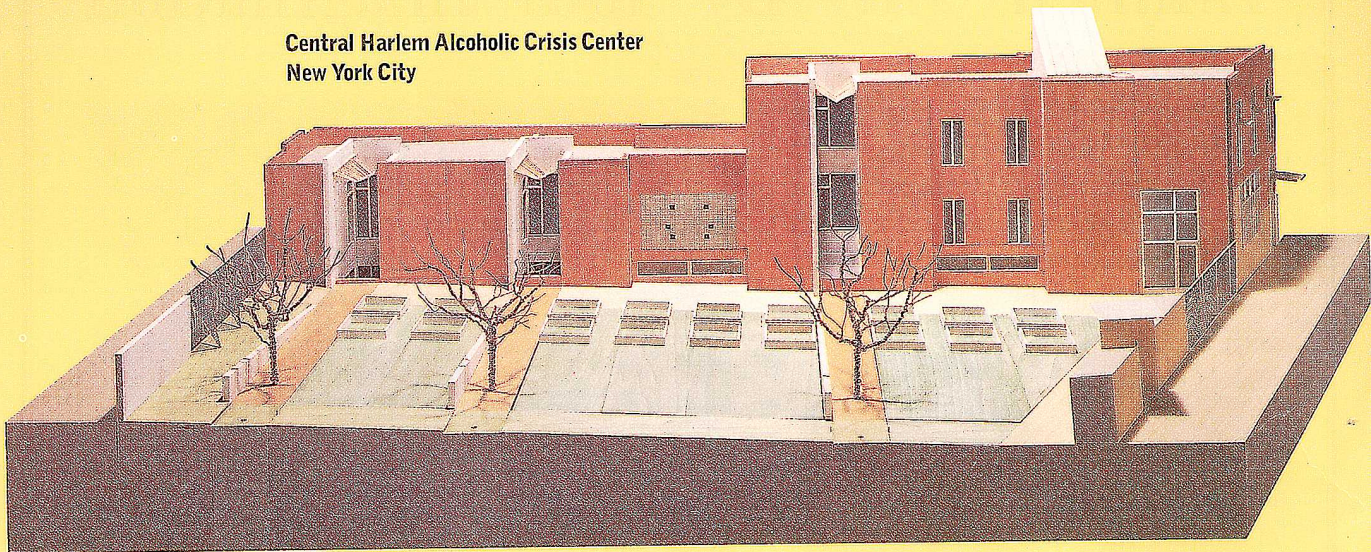
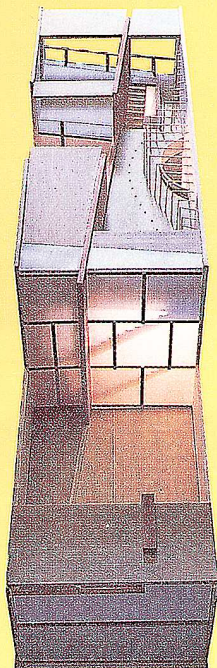
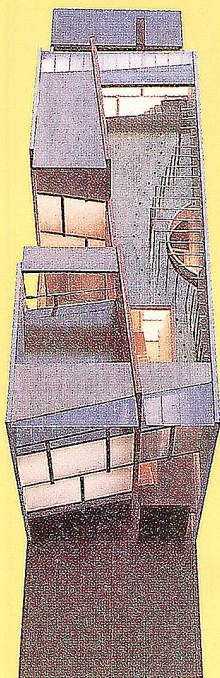


**Central Harlem Alcoholic Crisis Center  
New York City**



**Harlem Housing  
Caples Jefferson Architects**

**House for Three Generations  
New York City**



The rehabilitation center overlooks a community garden (top). A load-bearing brick wall bisects the rowhouse for a generational family (above, left and right).

Sara Caples and Everardo Jefferson of New York City-based Caples Jefferson Architects devote half their professional practice to socially conscious projects. Currently, the husband-and-wife team is designing two projects in Harlem that offer alternatives to traditional housing. A two-and-a-half-story night club is being converted into an 8,000-square-foot long-term rehabilitation facility for 19 recovering alcoholics. Common spaces are located at the south-facing front of the linear, brick-and-limestone-clad building. Bedrooms and shared bathrooms are housed in the rear wing. Zoned as a hotel, the facility offers each resident a private room with oblique views of a community garden through a light well. The garden provides a meeting place for inhabitants and neighbors.

A few blocks away, a private developer has commissioned Caples Jefferson to design a 4,000-square-foot rowhouse for a family spanning three generations. The grandparents will occupy a fully accessible apartment on the ground floor, with a kitchen and dining room that will be shared by the entire family. Parents and children occupy two separate apartments, vertically stacked on the building's three upper stories, and separated by a light well. Each apartment has its own courtyard or garden. The rowhouse will be completed by the end of this year, the recovery center by 1998. *N.C.*