

国际新建筑

August 2012

10

INA

International New Architecture



Feature 专题
Building Roof
建筑屋顶

江苏人民出版社



鸟瞰图
Bird's eye view

| Caples Jefferson Architects |

Marcus Garvey Houses | 社区新天地 |

——马库斯·加维住宅社区中心 Community Center



卡普尔斯·杰弗逊建筑事务所在布鲁克林布朗斯维尔区建于20世纪70年代的住宅区建筑中加入了新的社区中心。这需要在闲置的城市空地上为孩子和成人创造一系列受保护的小型景观。

设计团队通过对室外物理分区的分析，排除了摩擦地带。不同特征和功能的一系列室内外庭院被设计了出来——包括铺设了地砖的室内庭院和喷泉、一片小树林、一个铺设了地砖且有顶的室外庭院、一个游乐场和一个篮球场。每一代人、每一个日常活动周期、每一种活动都有专属的场所。青少年可以玩篮球、孩子可以在游乐园玩耍，而老年人则可以坐在他们自己的开放庭院上。

透明的室内环境便于监护人看管孩子。庭院是混乱的居民区中的安全地带，周围有防弹玻璃，可以看到里面的建筑结构，邀请行人参与。

两座不规则的瓷砖建筑由旁边透明的矩形走廊连接。这个南北走向的室内庭院营造了冥想和特殊的活动场所。一扇东西向的天窗丰富了这个大型建筑的剪影，它成为了会议室主要的光来源。

在原先20世纪70年代的建筑中，新的社区中心诞生了，它的外形轮廓强化了它在这座建筑中的显著地位。这个中心有许多受保护的外部空间，这是从未未曾想过的。



边门和老年人庭院
Side entrance and senior court

朝向会议的内部
Inner court towards meeting room





边门和老年人庭院
Side entrance and senior court

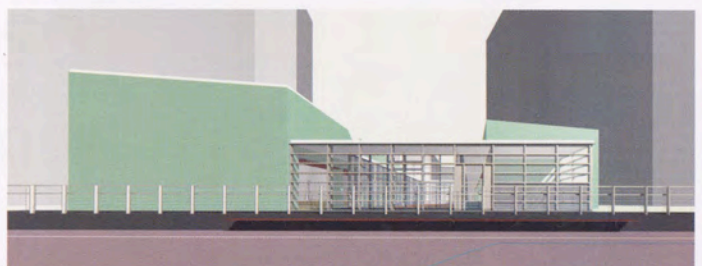
Caples Jefferson Architects added a new community center in the middle of an existing 1970's Housing Authority project in the Brownsville section of Brooklyn. This was a mission to create a series of small, protected, landscapes for children and adults in place of a disused urban void.

Analysis led to the physical sectoring of the outdoors in order to eliminate zones of friction. A series of inner and outer courtyards were developed with different characters and functions—a paved inner court and fountain, a grove of trees, a paved and shaded outer court, a playground, a basketball court. Each generation, each cycle of the day's activities, each group of activities has its own sector, its own physical sphere. Teens can play at basketball, while young children are in the play-park and seniors sit out in their own open court. The interior is transparently arranged to allow all children to remain in eye contact with their protectors. The courtyard is a place of safety in the middle of a troubled neighborhood, protected from crossfire by bulletproof glass that reveals the constructive life within, inviting participation to passersby.

Two opaque irregular glazed brick masses of heavy construction are linked with strict orthogonal corridors of light transparent construction. Within its precinct, an interior north-south courtyard creates a space for contemplation and special event gatherings. An east-west skylight interrupts the silhouette of the largest brick mass; it becomes the dominant light gathering element in the meeting room.

A formal interpenetration is created between the existing 1970's building and the new community center in which the shape and the silhouettes reinforce the center's programmatic position as a dominant element in the complex. The center is a protected exterior space contained within a dominant form, which activates a number of exterior spaces formerly undefined.

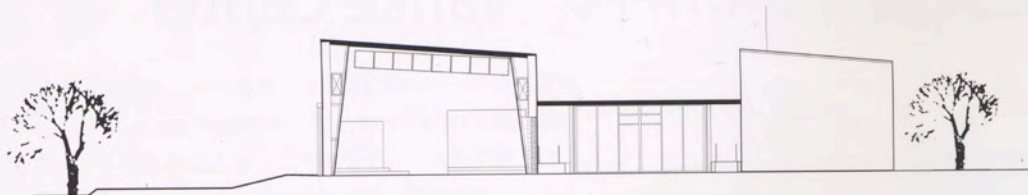
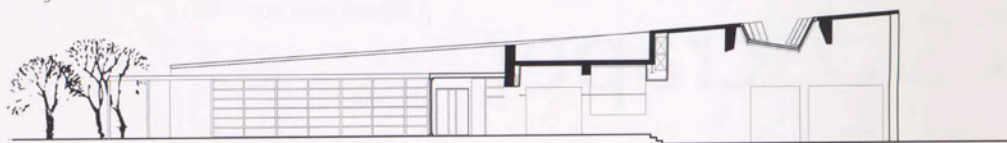
透视图
Building perspective



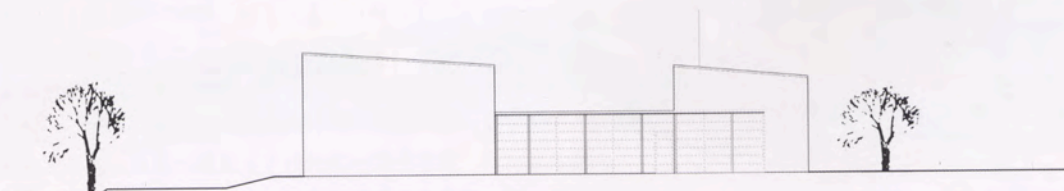


老年人庭院夜景
Building at night from senior court

剖面图
Building sections



立面图
Building elevations



Credits

Location: Brooklyn, NY, USA
 Completion Year: 2011
 Architects: Caples Jefferson Architects PC
 General Contractor: EMCO Tech Construction Corp.
 Mechanical Contractor: Taj Air Conditioning & Refrigeration Co.
 Plumbing Contractor: Skountzos Plumbing & Heating
 Electrical Contractor: Medco Electrical Contracting
 Structural: DeSimone Consulting Engineers (Design), BGA Consulting Engineers (Construction)
 MEP Engineers: Loring Consulting Engineers
 Civil Engineers: Michael Klein, PE., CHMM
 Geotechnical Engineers: RA Consultants
 Landscape Architect: Elizabeth Kennedy Landscape Architects
 Building Department: Design 2147
 Surveyor: Albert Bianco Surveyor
 Photographer: Michael Anton, Julian Olivas, Nic Lehoux
 Client: NYC Housing Authority (NYCHA)